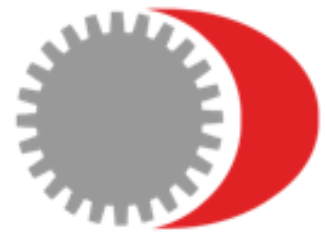


**BHORUKA**

A YKK AP COMPANY

# Extruding Excellence



Admired Companies to watch in India 2025 by **Forbes India**

**Tomorrow's Mettle**

**BHORUKA EXTRUSIONS PRIVATE LIMITED**



# Vision

Our **vision** is to be the **Preferred Extruder** of choice for iconic projects by delivering products and services that reduce our **customers' total cost of ownership**.

We do this by **leveraging technology** and a commitment to sustainability, customer satisfaction, and operational excellence

## Path to becoming preferred Extruder



- ◆ **Customer Satisfaction**  
Ensuring Client needs are met with High Quality Service
- ◆ **Operational Excellence**  
Streamlining processes for Optimal Performance
- ◆ **Leveraging Technology**  
Leveraging Technology to enhance efficiency and real Time access.
- ◆ **Sustainability**  
Implementing Eco-friendly practices for long term viability

# About Us

## Established in 1979

100% subsidiary of  
\$6.5 Billion YKK AP Inc.  
Japan

Extrusion capacity of  
1200 MT / Month  
(6" / 8" / 9" - extrusion  
press)

In-house Anodizing  
capacity of 250 MT /  
Month (Italtechno, Italy)

In-house Powder coating  
capacity of 350 MT /  
Month (Nordson , U.S.)

In-house Machining Facility  
with new CNC Machining  
Centres from FOM  
Industries, Italy

## »» Key Highlights

### ★ SAP Implementation Award



Award winning SAP  
implementation  
(ECC 6.0) in Metal Sector

### ★ Online Self-Updating E-catalogue



Instant access to thousands of  
profiles listed in different  
categories

### ★ Bhoruka 360 CRM & E Planner



Online order tracking through  
Bhoruka 360 CRM portal) and  
Planning (E-Planner)

### ★ Approved Extruder for System Windows



Airclos, AluK, Asahi, Dorma  
IWIN, Schueco & others





# About YKK AP

# Philosophy



## CYCLE OF GOODNESS

“No one prospers without rendering benefit to others”

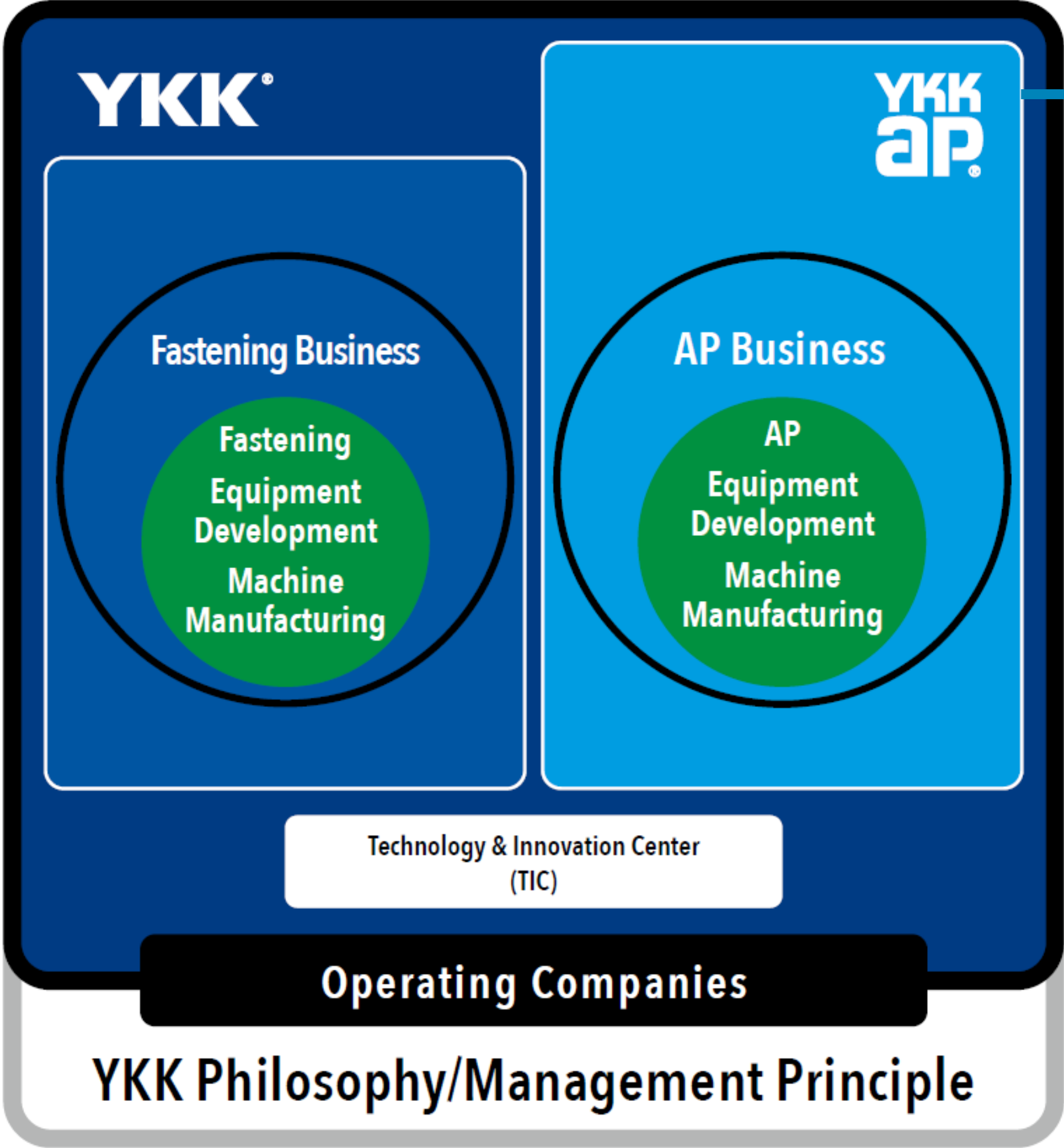
If we keep creating **new values by innovative ideas and inventions** through our business activity, we can expand our business. That brings **prosperity to our customers** and business partners, and as a result, we can **make a contribution to society**



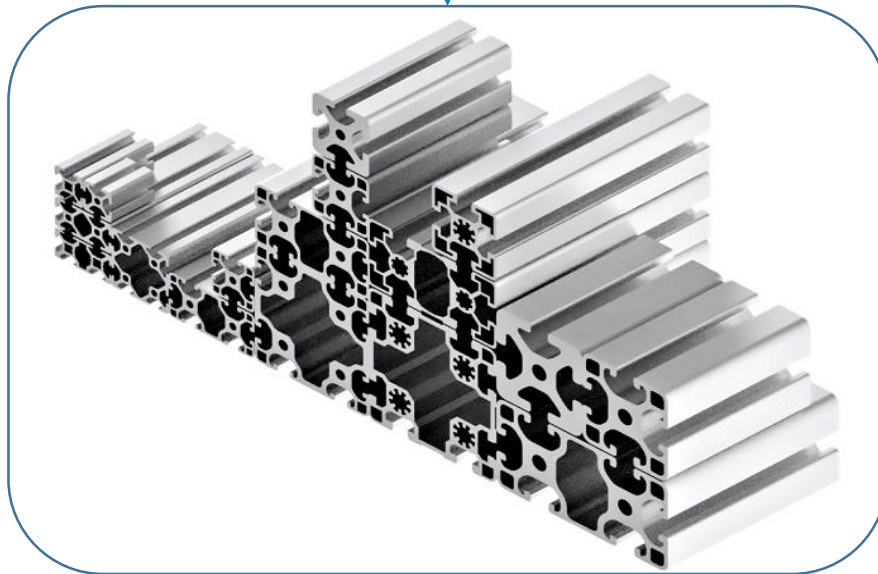
**Tadao Yoshida**  
**Founder of YKK**



# YKK Group Structure



**BHORUKA**  
A YKK AP COMPANY



## Profile Business

100% made-to-order aluminium extrusion that caters primarily to the building & construction sector & OEM Sector



**IWIN S** **IWIN E**  
Aluminium Windows & Doors Aluminium Windows & Doors

## System Business

IWIN Aluminium Doors and Windows is a home-creation B2B brand designed by YKK AP with Japanese Precision.

# About YKK AP

YKK AP was incorporated as a subsidiary of a zipper manufacturing company in 1957. Since entering the architectural products business, it has grown worldwide to become a leading company in its field

Key Information of YKK AP		FY2024
Number of employees	Japan	12,991
	Ratio of men to women (Japan)	Men: 73 % Women: 27 %
	Overseas	4,843
Number of women in management positions	Number of employees	133
	Ratio	6.50%
Employment rate of persons with disabilities (average for each fiscal year)		2.44%
Contribution of Carbon Emmission through high thermal insulation products	vs. FY2020	173%
	Quantity	811 kt CO2
Number of locations	Japan	194 locations
	Overseas	58 locations
Manufacturing sites	Japan	24 sites
	Overseas	12 sites

## Purpose of YKK AP

*We Build a Better Society  
Through Architectural Products*

With a spirit of curiosity and exploration, we develop architectural products of true value that connect people, planet, and the future.

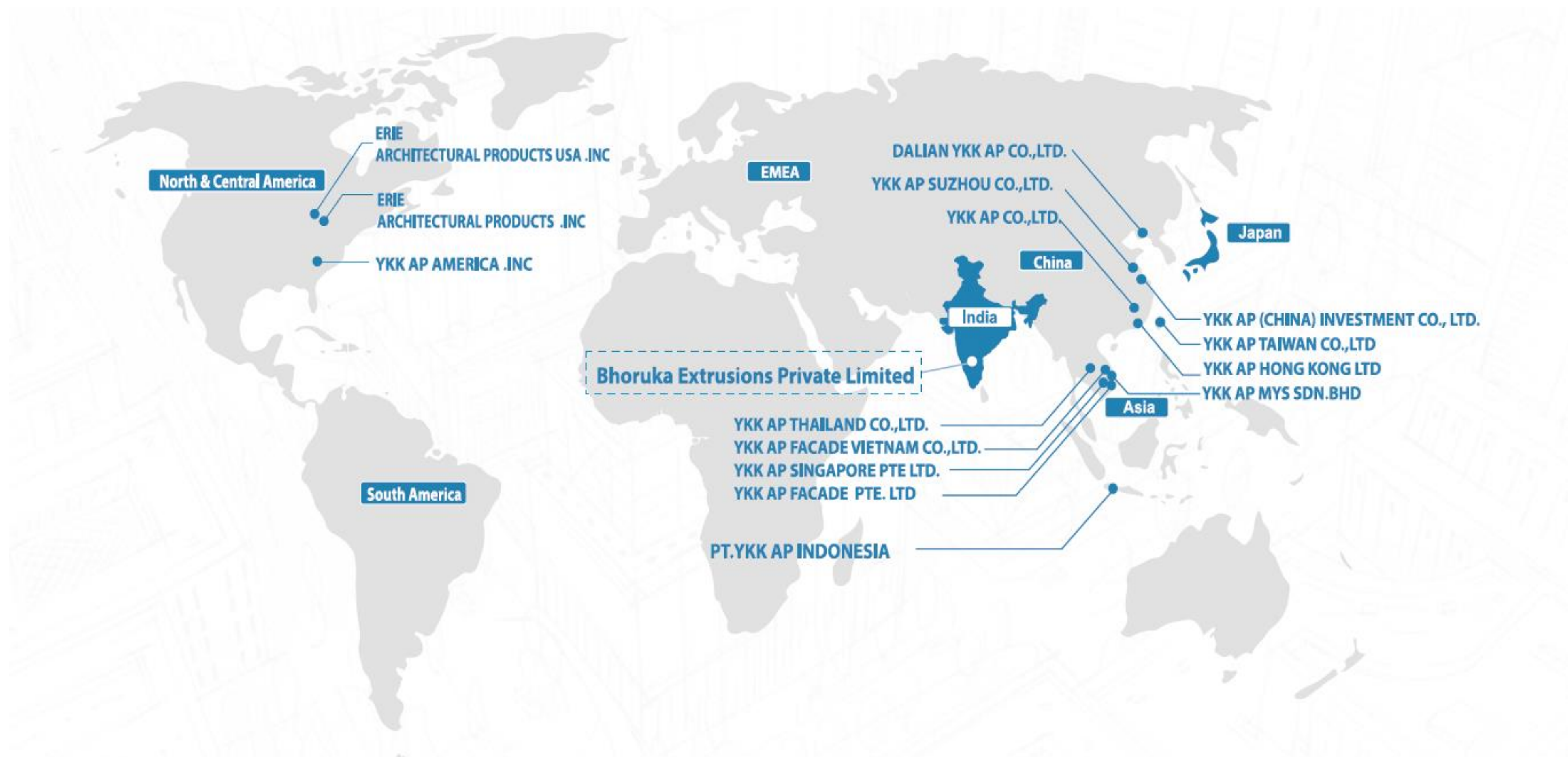
We want to create a better society, while remaining committed to the art and technology that have always been fundamental to architectural culture

Sales	FY2024
Net sales (consolidated)	\$3.74 billion
Japan	\$3.13 billion
Overseas	\$0.83 billion
Overseas ratio	18%

1USD=142.92JPY



# Global Presence





# Why Bhoruka ?

Bhoruka Extrusions is a **45 year old** trusted brand in Aluminum Extrusion Industry which is owned & guided by YKK AP Inc., Japan - the largest player in the global façade & fenestration business. Our customers are our most valuable partners. We believe in a customer- centric approach where understanding and addressing customer need is our top priority. We will listen, adapt, and deliver solutions that precisely meet customer requirement.



## Technology-enabled value creation

Bhoruka 360 and E-planner offer customers real-time order tracking, estimated dispatch dates and document access.



## Compliance & certifications

Bhoruka ensures full compliance with global standards through certifications like ISO, BIS, IGBC,GRIHA REACH & ROHS



## Ensuring high level of reliable OTIF

Using E Planner and streamlined processes to consistently achieve high On-Time In-Full (OTIF) reliability.



## Optimum Cost of ownership

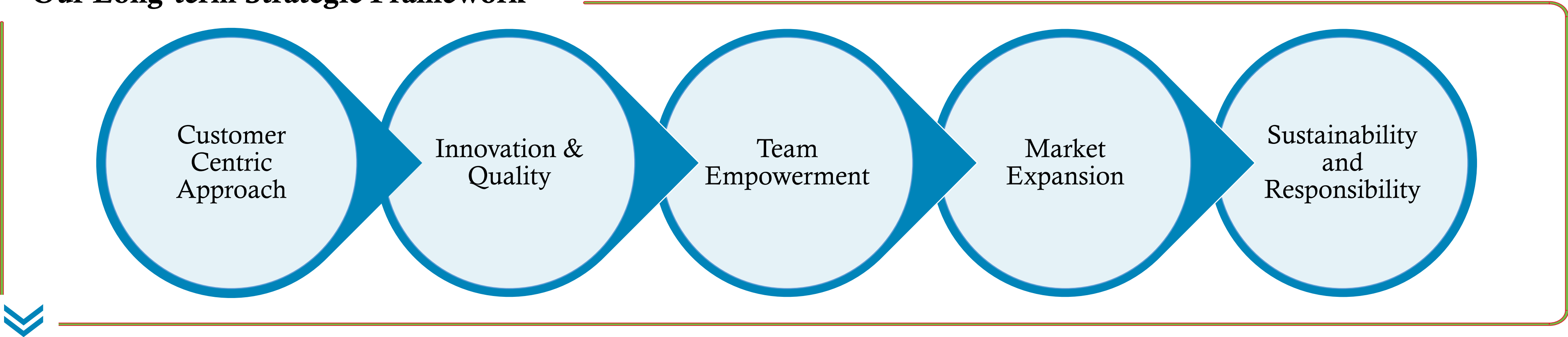
Mean weight billing, dispatch tolerance, and matching section ensure optimal ownership cost for the customer



## Integrated Manufacturing Facility

Integrated Extrusion facility with Toolroom, Anodizing, Powder Coating and machining Unit.

## Our Long-term Strategic Framework

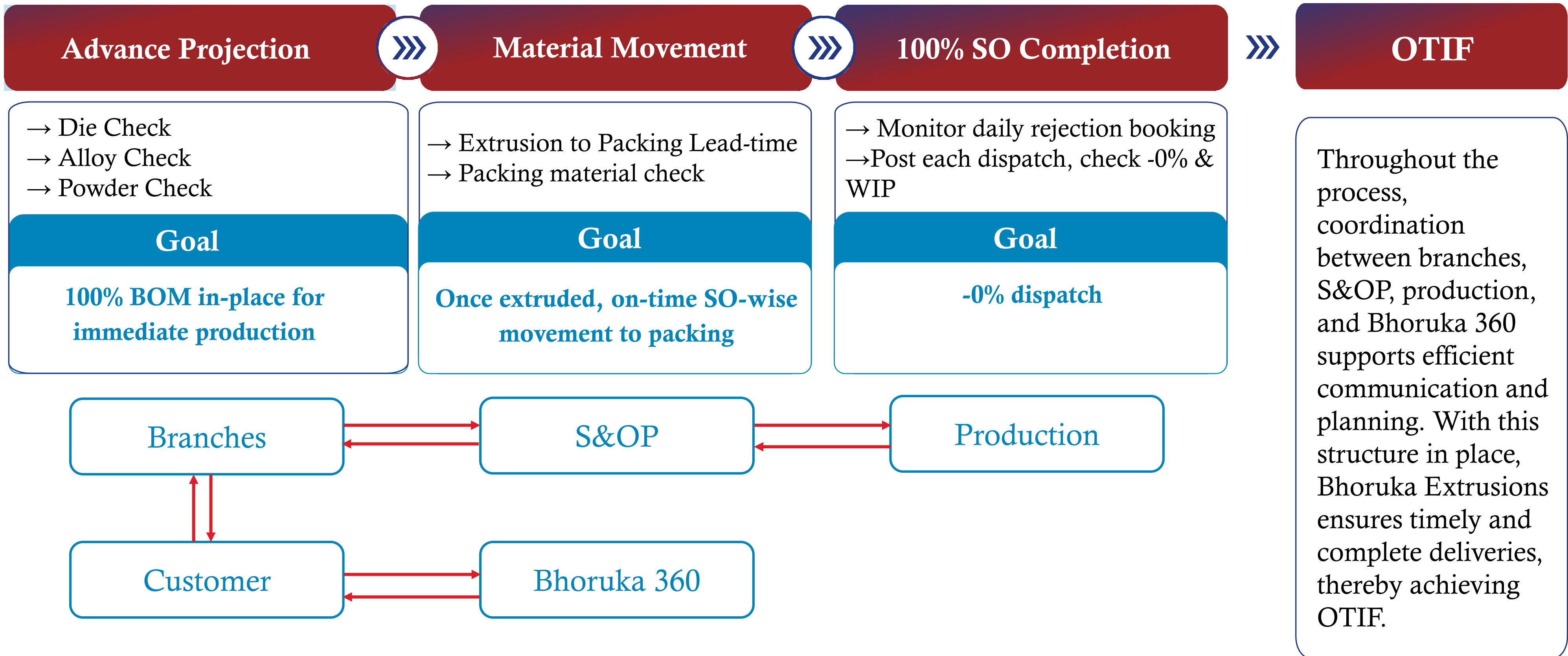


# Key Differentiators

Factor	Bhoruka Extrusions	Competitor	Advantage at <u>Bhoruka Extrusions</u>
SO Release	In Pieces	In Kgs	Matches with the Cutting List of Fabricator or Façade Contractor Software
Weight Measurement	Drawing Mean Weight	Actual Weight	Matches with Tender weight, PO-Invoice consistency, ~3.5% savings on powder weight
Dispatch Tolerance	1-1000 pcs (-0%+5%)/ >1000 pcs (-0%+2%)	+/- 10% in Kgs	Reduced inventory and less total cost
Matching Section	Ageing and Invoice Blocked	No Check.	Reduced inventory at Customers
Order Status	Online through Bhoruka 360 CRM Portal	NA	Customer can track PI-PO-SO-Production-Dispatch online
Estimated Dispatch Date	Through E-Planner in Bhoruka 360 CRM Portal	Excel	Customers can plan operations based on estimated date of dispatch

# Key Differentiators

How Bhoruka's planning team optimizes material flow, order & OTIF fulfillment?



**On Time:** Delivering the aluminum extruded profiles to the customer exactly by the agreed date.

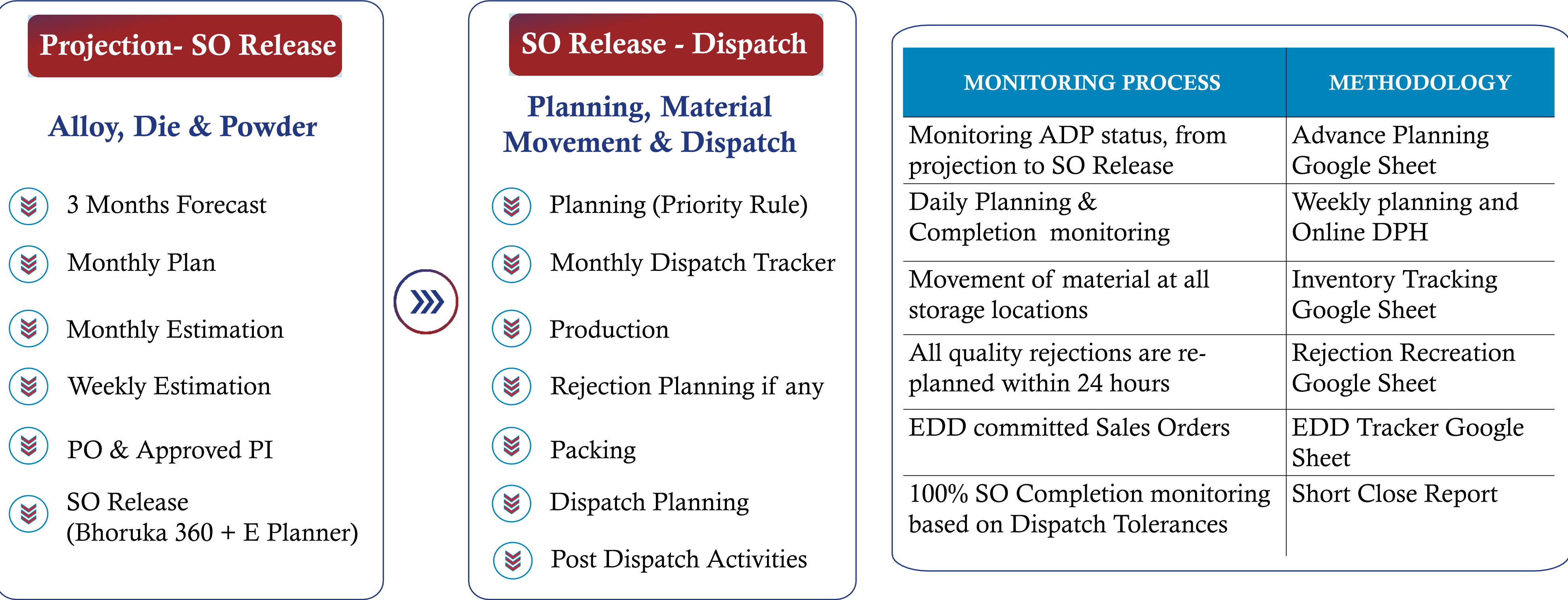
**In Full:** Supplying the complete quantity and specifications of extruded profiles as ordered, without any shortages or errors.



# Key Differentiators

## How Bhoruka’s planning team monitor production to Dispatch Process Flow?

With powerful tools like the **Advance Planning** and **EDD Trackers**, we ensure every Sale Order moves like **clockwork** from SO Release to delivery. At Bhoruka, production to dispatch isn’t just managed, it’s mastered with proactive planning, real-time monitoring, and seamless coordination





# Integrated Facility



State-of-the-art  
manufacturing facility in  
Mysore, Karnataka

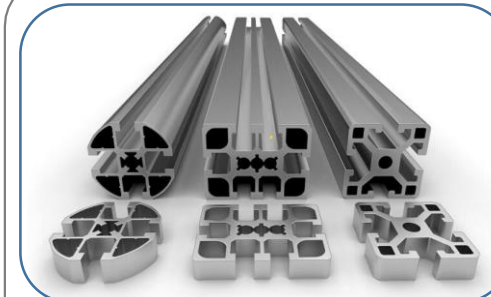


**New Development** - New  
Extrusion Press (HLT)  
to be commissioned in  
Sep 2025



## ToolRoom

- › Equipped with  
Conventional and  
CNC Machining  
Centres



## Extrusion

- › Equipped with 6", 8"  
& 9" Extrusion Press  
with a Capacity of  
1200MT/Month



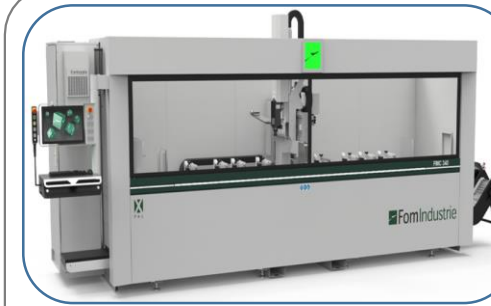
## Anodizing

- › 7 Tank Treatment Plant  
with Black, Silver,  
Champagne and Bronze  
Shades



## Powder Coating

- › Hexavalent  
Chromium Process  
with any RAL  
Shades



## Machining

- › Machining Centres  
from FOM Industry  
Italy



## Foundry

- › Oil Fired furnace to cast  
billets in-house from the  
in-house rejection



# Equipment's

TECHNICAL FACT SHEET			
Parameters	Press-1	Press-2	Press-3
MAKE	Wean United (USA)	Year Chang (Taiwan)	Cheng Hua (Taiwan)
Strength of extrusion press (TONS)	1800	1100	2750
Diameter of billet	203 mm	152 mm	228mm & 203mm
Diameter of container	210 mm	158 mm	236mm & 210mm
Diameter of main Cylinder - Inches	37	29.5	44.48
Diameter of small Cylinder - Inches	9	7.087	9.09
Maximum pressure of Press (BAR)	210 BAR	210 BAR	230 BAR
Mark of Billets	6063, 6005, 6105, 6061		6063, 6060, 6101, 6005, 6351, 6061, 6082
(6063-6060)			
Conveyor Length	36Mtrs.	36Mtrs.	50.90 Mts
Type of Billet Oven (gas, diesel, induction)	Hot log shear	Induction	Hot log shear
Type of Puller	Track type	Track type	Track type

TOOL ROOM	
Die types	Solid, Hollow, Semi-hollow
Dia CCD	Solid – 254mm; Hollow-230mm
# of sections	>14,000
Lead Time	Solid - 15 days; Hollow - 21 days

BHORUKA ANODISING	
Make	Italtecno, Italy
Microns	5 to 25
Colors	Silver, Champagne, Bronze , Black
Maximum Length	6400 mm
Finish	Matt, Brush

BHORUKA POWDER COATING	
Pre - Treatment	Chemetall, Germany
Powder Coating	Nordson , U.S.
Spray System	Automatic
Thickness Range	60 To 120 Microns
Colors	All RAL Shades
Type	Metallic / Non Metallic
Gloss	High Glossy, Semi Glossy, Matt
Finish	Plain, Texture, Structure
Max Length	7500 mm

MACHINING	
Machining Centres	FMC 340, Blitz Alva-550 Double Head Cutting
Make	FOM Industries, Italy
Operations	Milling, Drilling, Boring, Countersinking, Angle Cutting, Turning & Tapping



# Alloy Details

Chemical Composition as Per EN 573-3:2007

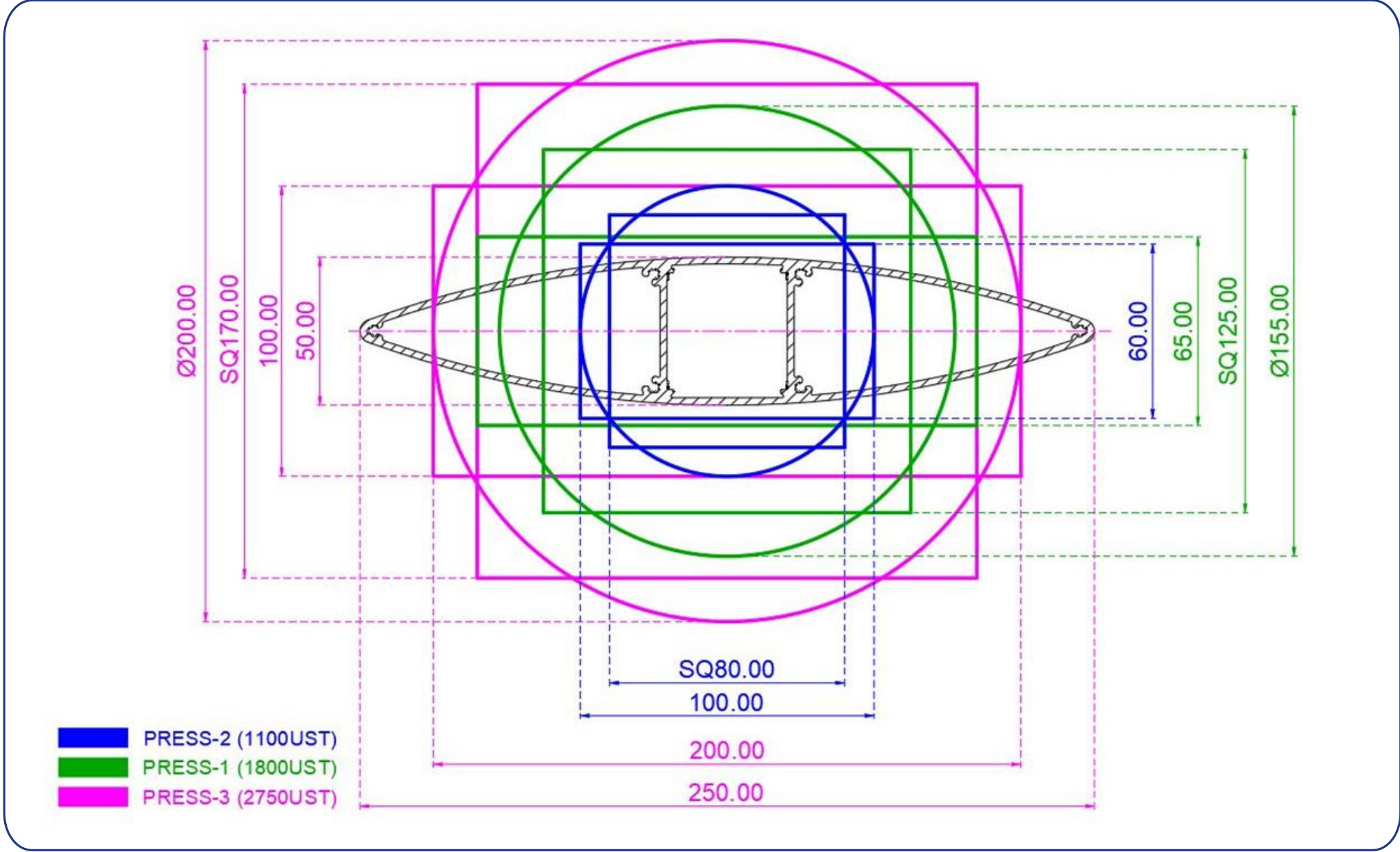
Alloy	Si	Fe	Cu	Mn	Mg	Cr	Zn	Ti	Aluminum Min
6063	0.20-0.60	0.35	0.1	0.1	0.45-0.90	0.1	0.1	0.1	Remainder
6060	0.30-0.60	0.10-0.30	0.1	0.1	0.35-0.60	0.05	0.15	0.1	Remainder
6061	0.4-0.8	0.7	0.15-0.4	0.15	0.8-1.2	0.04-0.35	0.25	0.15	Remainder
6005	0.6-0.90	0.35	0.1	0.1	0.40-0.60	0.1	0.1	0.1	Remainder
6105	0.6-1.0	0.35	0.1	0.15	0.45-0.8	0.1	0.1	0.1	Remainder
6082	0.7-1.3	0.5	0.1	0.4-1.0	0.6-1.2	0.25	0.2	0.1	Remainder
6101	0.30-0.7	0.5	0.1	0.03	0.35-0.8	0.03	0.1	0	Remainder
6351	0.7-1.3	0.5	0.1	0.40-0.8	0.40-0.8	0	0.2	0.2	Remainder

Mechanical properties as per DIN 755-2/IS-1285

Alloy/T6	Tensile Strength, <i>min</i> MPa	Proof Stress <i>min</i> MPa	Elongation A50mm <i>min</i> in %
6060	185	150	7
6101	200	170	8
6063	185	150	7
6005	255	200	15
6105	260	240	8
6061	290	235	7
6351	295	255	7
6082	295	255	7

- ◆ **T4 Temper**  
Solution heat treated & naturally aged
- ◆ **T5 Temper**  
Cooled from hot working and artificially aged (at elevated temperature)
- ◆ **T6 Temper**  
Heat-treated and artificially aged
- ◆ **T66 Temper**  
Heat-treated and artificially aged using a special process to improve mechanical properties

# Extrusion Range



- ◆ Unique Identification mark in all new profile developments (since 2015)
- ◆ It will be located at only non-functional and unexposed/hidden area of the profile.
- ◆ This Identification mark will be prominent throughout the profile length (utilizing only 0.3mm thickness)
- ◆ ID mark will be non-functional/ un-exposed area)

## 8"--Press-1 (1800UST)

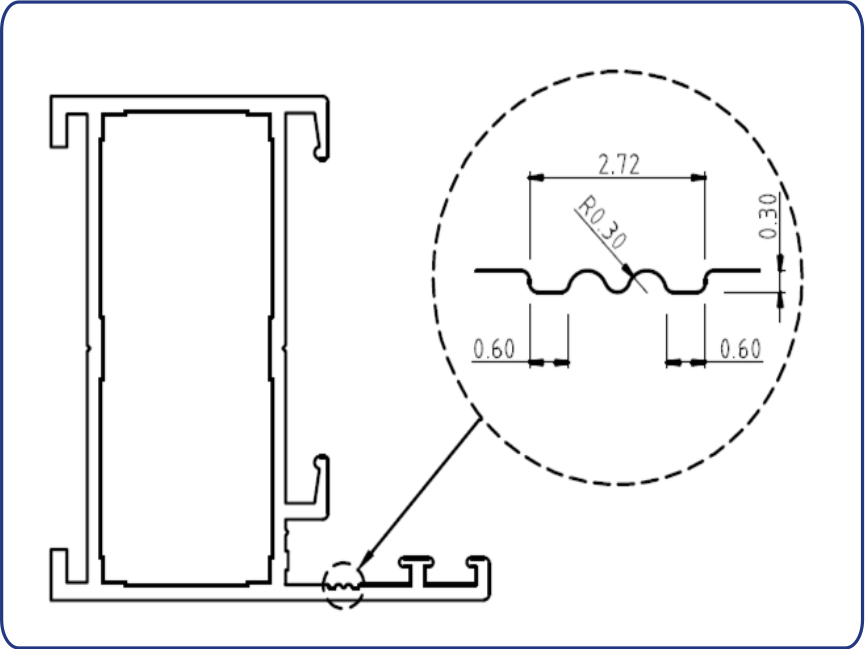
Square	125x125mm
Rectangle	170x65mm
Circle	Ø155mm

## 6"--Press-2 (1100UST)

Square	80x80mm
Rectangle	100x60mm
Circle	Ø100mm

## 9"--Press-3 (2750UST)

Square	170x170mm
Rectangle	200x100mm
Circle	Ø200mm
Elliptical	250x50mm





# Serving Industries

Leveraging a broad portfolio and competitive edge to deliver excellence in construction, automotive, and renewables.

## Building & Construction Segment



- ◆ Made-to-order aluminium extrusions for façades, curtain walls, and cladding system in different size and finishes.
- ◆ Our catalogue contains more than 18,000 sections that Bhoruka has developed by virtue of being in the industry for more than 44 years



- ◆ We hold the unique distinction of supplying high-quality aluminium extrusions to globally reputed to Door Window systems as follows:
- ◆ Airclos, AluK, Asahi, Dorma, IWIN, Schueco and others.

## OEM / Industrial Segment



### Diverse Portfolio

- › Solar Panels
- › Automotive
- › Electrical and Electronic Equipment's
- › Machine Members

### Bhoruka's Competitive Edge

- › Under One Roof –EXT, PC/ANO, FAB
- › Compliance and Certifications
- › Total Cost of Ownership
- › Sustainability

### Automotives

- › Roof Rails
- › Nudge Guards
- › EV Battery Enclosures

### Scale Opportunity

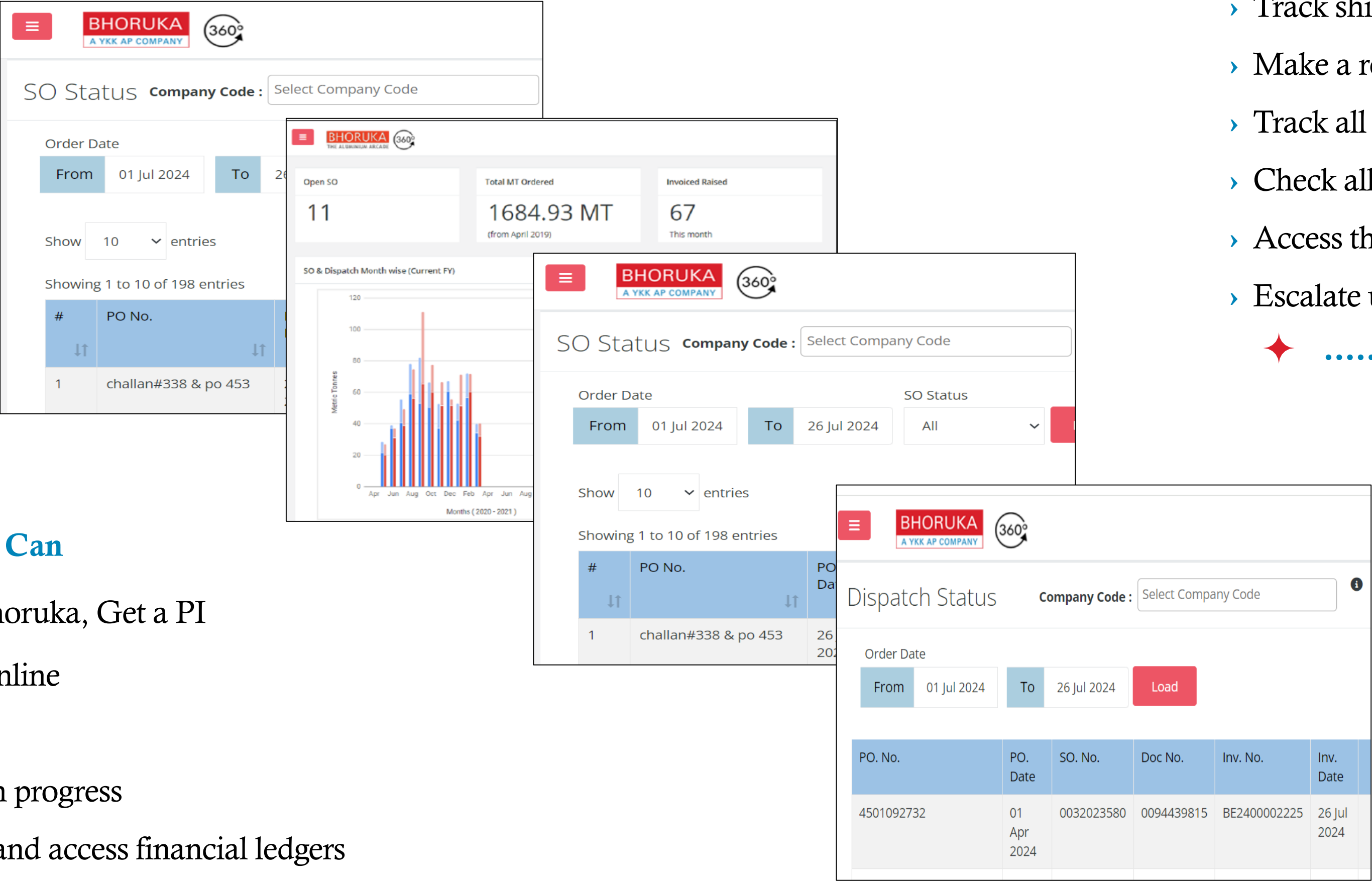
- › Expand to other OEMs
- › Target Renewable Energy Sectors



# Bhoruka 360

Leveraging on Technology - [Bhoruka 360](#) - The Industry first CRM module for the customer.

- › Track shipments
  - › Make a request for factory visit
  - › Track all past transactions and invoices
  - › Check all contracts and agreements
  - › Access the product catalogue
  - › Escalate unresolved issue
- ✦ ..... all on real-time basis



✦ **Our Customers Can**

- › Release PO to Bhoruka, Get a PI
- › Approve the PI online
- › Check SO status
- › Check production progress
- › Check deliveries and access financial ledgers

# 3D Printing

## Industry's First Extruder to have 3D Printing Technology



- › FFF printing technology with auto platform calibration.
- › Print up a 60-micron resolution with a 0.25mm nozzle.
- › Comes in various sizes. The machine has a build volume of 300mm x 300mm x 400mm

## 3D Printed Samples developed prior to Die Development



- › Customers can test the product for snap/slide fitment or gasket development prior to die manufacturing
- › Visualize and test the profile's form and fit quickly before committing to die manufacturing.



# Eco-friendly Manufacturing

At Bhoruka Extrusions, sustainability isn't just a goal-it's a responsibility we live by every day with every product we supply is ROHS & REACH compliant, proving that safety and responsibility can go hand in hand

Here's how we're making a difference:



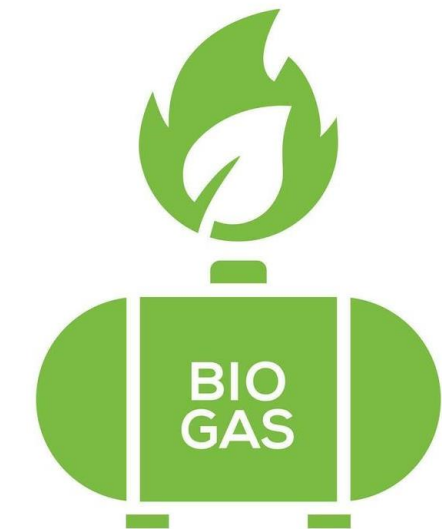
Our 16-acre manufacturing facility is home to **260+ trees**, reflecting our commitment to a greener and more sustainable environment



Our **Press-3** facility is equipped with Roof-top-Solar which has the capacity to generate the Solar power of **418KWP**



Introduced **biodegradable poly cover packing** for aluminium profiles, made from renewable materials which is Fully decomposable, eco-safe alternative to HDPE



Implemented sustainable practices including **75% aluminium chip recovery**, **95% treated water reuse**, **20% packaging reduction**, **biogas** from canteen waste, **ETP sludge reduction**, and CNG fleet with solar energy.



Certifications

Quality Compliance

Bhoruka Extrusions ensures strong quality compliance, holding ISO - QMS certification and BIS licenses for stringent quality standards

ISO 9001: 2015 for QMS

from Bureau Veritas

Bureau Veritas Certification



BHORUKA  
A YKK AP COMPANY

BHORUKA EXTRUSIONS PVT. LTD.

NO. 1, KRS ROAD, METAGALLI, MYSURU – 570 016, KARNATAKA, INDIA.

Bureau Veritas Certification Holding SAS – UK Branch certifies that the Management System of the above organisation has been audited and found to be in accordance with the requirements of the Management System Standard detailed below.

Standard

ISO 9001:2015

Scope of certification

MANUFACTURE OF MILL FINISH, ANODIZED AND POWDER COATED ALUMINIUM EXTRUSIONS IN STANDARD AND FUNCTIONAL SHAPES FOR STRUCTURAL / ARCHITECTURAL COMPONENTS, TRANSPORT, TEXTILE AND ELECTRICAL INDUSTRIES

Original cycle start date: 12 March 1995

Recertification cycle start date: 09 December 2024

Subject to the continued satisfactory operation of the organisation's Management System, this certificate is valid until: 12 December 2027

Certificate No. IND.24.2447/QM/U      Version: 1      Issue date: 09 December 2024



Signed on behalf of BVCH SAS UK Branch  
Jagdishesh N. MANIAN  
Director – CERTIFICATION, South Asia  
Commodities, Industry & Facilities Division

For certificate authenticity, click here  
<https://certcheck.ukas.com/>

ISO 9001      IN049168



Certification body address: 5th Floor, 100 Lower Thames Street, London, EC3R 6DL, United Kingdom.

Local office: Bureau Veritas (India) Private Limited (Certification Business)  
72 Business Park, Marol Industrial Area, MIDC Cross Road "C",  
Andheri (East), Mumbai – 400 083, India

Further clarifications regarding the scope of this certificate and the applicability of the management system requirements may be obtained by consulting the organisation.  
To check this certificate validity please call + 91 22 6274 2000.

BIS License for Quality

Compliance – IS 733



भारतीय मानक ब्यूरो  
Bureau of Indian Standards  
The National Standards Body of India

For any other communication

Address: Bengaluru Branch Office-  
Peenya Industrial Area, 1st  
Stage, Bengaluru - Tumkur  
Road, Bangalore, BANGALORE  
RURAL,KARNATAKA,560058

Phone: 08028394955

Fax: 08028398841

E-Mail: bnbo@bis.gov.in

Web: www.bis.org.in,  
www.manakonline.in

Our Ref.:BNBO/CM/L 6200220480

Dated: 26-11-2024

Subject: Grant of BIS Certification Marks Licence No 6200220480 as per IS 733:1983.

M/S BHORUKA EXTRUSIONS PRIVATE LIMITED  
No-01, K.R.S. Road, Metagalli Industrial Area,Mysuru,MYSORE,MYSORE,KARNATAKA,INDIA 570016

Dear Madams(s)/Sir,

With reference to your application, we are pleased to inform you that the Certification Marks Licence has been granted to you to use the Standard Mark in respect of the followings:

**Wrought Aluminium and Aluminium Alloy Bars, Rods and Sections (for General Engineering Purposes)**

Product:-

Grade/Class/Type/Variety
Name of the product: Wrought Aluminium and Aluminium Alloy Bars Rods and Sections For General Engineering Purposes as per IS 733 for following scope 1 Type of section Regular Section Dimensions Sizes Width 11 mm to 260 mm Thickness 0.9 mm to 20 mm Condition Temper designations T6 Designation 63400 64430 65032 2 Type of section Rod Dimensions Sizes Diameter 5 mm to 120 mm Condition Temper designations: T4 Designation 63400 64430 65032 3 Type of section Rod Dimensions Sizes Diameter 5 mm to 120 mm Condition Temper designations T6 Designation 63400 64430 65032 4 Type of section Bar Dimensions Size Width 10 mm to 300 mm Thickness 2 mm to 20 mm Condition Temper designations T4 Designation 63400, 64430, 65032 5 Type of section Bar Dimensions Sizes Width 10 mm to 300 mm Thickness 2 mm to 20mm Condition Temper designations T6 Designation 63400 64430 65032 6 Type of section Regular Section Dimensions Sizes Width 11 mm to 260 mm Thickness 0.9 mm to 20 mm Condition Temper designations T4 Designation 63400 64430 65032 7 Type of section Irregular section Dimensions Sizes Width 15 mm to 250 mm Thickness 1.5 mm to 20 mm Condition Temper designations T4 Designation 63400 64430 65032 8 Type of section Irregular section Dimensions/Sizes Width 15 mm to 250 mm Thickness-1.5 mm to 20 mm Condition Temper designations T6 Designation 63400 64430 65032

1. The licence is granted on the explicit condition that you will mark entire/substantial production which conforms to the Indian Standards.

2. The number assigned to this licence is CM/L- 6200220480 which has been made operative from 2024-11-13 and is valid upto 2025-11-12. The licence number should invariably be referred to in your future correspondence.

According to sub-regulation (1) &(3) of Paragraph 5 of scheme I of Schedule II under Bureau of Indian Standards (Conformity of Assessment) Regulation, 2018, the annual licence fee of Rs. 1000.00 and the marking fee for use of standard mark as per Annexure-I of Scheme I of BIS(Conformity assessment) Regulation 2018 is payable by you with

BIS License for Quality

Compliance – IS 1285



भारतीय मानक ब्यूरो  
Bureau of Indian Standards  
The National Standards Body of India

For any other communication

Address: Bengaluru Branch Office-  
Peenya Industrial Area, 1st  
Stage, Bengaluru - Tumkur  
Road, Bangalore, BANGALORE  
RURAL,KARNATAKA,560058

Phone: 08028394955

Fax: 08028398841

E-Mail: bnbo@bis.gov.in

Web: www.bis.org.in,  
www.manakonline.in

Our Ref.:BNBO/CM/L 6200220379

Dated: 26-11-2024

Subject: Grant of BIS Certification Marks Licence No 6200220379 as per IS 1285:2023.

M/S BHORUKA EXTRUSIONS PRIVATE LIMITED  
No-01, K.R.S. Road, Metagalli Industrial Area,Mysuru,MYSORE,MYSORE,KARNATAKA,INDIA 570016

Dear Madams(s)/Sir,

With reference to your application, we are pleased to inform you that the Certification Marks Licence has been granted to you to use the Standard Mark in respect of the followings:

**WROUGHT ALUMINIUM AND ALUMINIUM ALLOYS EXTRUDED ROUND TUBE AND HOLLOW SECTIONS FOR GENERAL ENGINEERINGPURPOSES SPECIFICATION**

Product:-

Grade/Class/Type/Variety
Name of the product: Wrought Aluminium and Aluminium Alloys-Extruded Round Tubeand Hollow Sections for General Engineering Purposes as per IS 1285 for following varieties 1 Type of section Round Tube Dimensions Sizes Outside Diameter 8 mm to 200 mm Wall Thickness 1.3 mm to 6 mm Condition Temper designations T4 Designation 63400 64423 64430 65032 2 Type of section Round Tube Dimensions Sizes Outside Diameter 8 mm to 200 mm Wall Thickness 1.3 mm to 6 mm Condition Temper designations T6 Designation 63400 64423 64430 65032 3 Type of section Hollow Sections Dimensions Sizes Outside Width 10 mm to 275 mm Outside Height 10 mm to 70 mm Wall Thickness 1.5 mm to 10 mm Condition Temper designations T4 Designation 63400 64423 64430 65032 4 Type of section Hollow Sections Dimensions Sizes Outside Width 10 mm to 275 mm Outside Height 10 mm to 70 mm Wall Thickness 1.5 mm to 10 mm Condition Temper designations T6 Designation 63400 64423 64430 65032

1. The licence is granted on the explicit condition that you will mark entire/substantial production which conforms to the Indian Standards.

2.The number assigned to this licence is CM/L- 6200220379 which has been made operative from 2024-11-13 and is valid upto 2025-11-12. The licence number should invariably be referred to in your future correspondence.

According to sub-regulation (1) &(3) of Paragraph 5 of scheme I of Schedule II under Bureau of Indian Standards (Conformity of Assessment) Regulation, 2018, the annual licence fee of Rs. 1000.00 and the marking fee for use of standard mark as per Annexure-I of Scheme I of BIS(Conformity assessment) Regulation 2018 is payable by you with effect from 2024-11-13 for the period of validity of the licence licence in advance.



# Certifications Environmental sustainability and compliance

Bhoruka Extrusions is committed to environmental sustainability by aligning its practices with IGBC and GRIHA green building standards, and ensuring product compliance with RoHS and REACH environmental regulations

## GRIHA Certified for Aluminium Extrusions & IWIN Doors & Windows



**GRIHA Council**  
This is to certify that the products of

**“Bhoruka Extrusions Private Limited”**  
*IWIN Range of Aluminium Doors and Windows*  
(Under Typology: Doors & Windows: panels and frames)

have been included in the GRIHA Product Catalogue under the following categories:  
**GRIHA V.2015 criterion: 21 & SVAGRIHA criterion: 12**  
and  
**Aluminium extrusions**  
(Under Typology: Innovation products)

has been included in the GRIHA Product Catalogue under the following categories:  
**GRIHA V.2015 criterion: 31 & SVAGRIHA criterion: 14**

The products can be used in GRIHA & SVA GRIHA registered projects to meet the GRIHA & SVA GRIHA norms, respectively. This is valid only for the products which have been mentioned above.



The certificate for the above-mentioned products is valid from  
**24<sup>th</sup> May 2024 – 23<sup>rd</sup> May 2026**



**Sanjay Seth**  
Vice President & Chief Executive Officer


Note:  
1. Before selecting the above specified products, it is recommended to revalidate that the project is meeting the GRIHA's mandatory compliances.  
2. This evaluation has been done based on the documentation – in the form of 3rd party test results and/or declarations – submitted by the manufacturer to GRIHA Council.  
3. The enrolled product(s) only qualify for the criterion mentioned in the certificate.  
GRIHA Council is a joint initiative of Ministry of New and Renewable Energy, Government of India and The Energy and Resources Institute (TERI) to implement GRIHA (Green Rating for Integrated Habitat Assessment), India's National Rating System for Sustainable Habitats.  
www.grihaIndia.org

## IGBC Certified for Aluminium Extrusion & IWIN Doors & Windows




**Membership Certificate**  
This is to certify that


**Bhoruka Extrusions Pvt Ltd**  
is an Annual Member of Indian Green Building Council (IGBC)  
Bearing Membership No **IGBCMM170151**  
This certificate shall be valid up to December 2025



**K S Venkatagiri**  
Executive Director  
CII - IGBC



**B Thiagarajan**  
Chairman  
Indian Green Building Council



**C Shekar Reddy**  
Vice Chairman  
Indian Green Building Council

Indian Green Building Council  
CII - (Sohrabji Godrej Green Business Centre, Survey No. 64, Near Pitech City, R.R. Dist, Hyderabad - 500 084  
T: +91 40 4418 5132 / 33 F: +91 40 4418 5189 E: igbc@ciin W: igbc.in

## REACH Compliant for Mill Finish & Anodized Finishes from TUV India



**Test Report**  
Report No : TUV(I)/NL-145/25-26/NL-0525000151 PII  
Date : 14 May 2025

Name and address of customer : Bhoruka Extrusions Pvt Ltd  
#1,KRS Road, Metagalli,  
Mysore  
Pin Code: 570016

Reg No. : NL-145/25-26  
CA No. : NL-0525000151

Name of the sample : **Recycle more than 75% aluminium content-BSM – (Silver)Anodising**  
Batch No. : Grade :- 6063-T6 Alloy - Color :- BSM-(SILVER)  
Discipline : Chemical  
Product Category : Metal

Date of sample receipt : 06 May 2025  
Date(s) of analysis : 08 May 2025 - 14 May 2025

Objectives of Examination : As requested by client, SVHC screening is performed according to:  
(i) Two hundred and Forty-Seven (247) substances in the Candidate List of Substances of Very High Concern (SVHC) for authorization published by European Chemicals Agency (ECHA)  
Regulation (EC) No 1907/2006 concerning the REACH.  
Article 33 of Regulation (EC) No 1907/2006 requires supplier of an article containing a substance meeting the criteria in Article 57 and identified in accordance with Article 59(1) in a concentration above 0.1% weight by weight (w/w) shall provide the recipient of the article with sufficient information.

**REACH Requirement** : **Below 0.1 % (w/w) in the submitted sample.** **PASS**




**Results Summary:**  
According to the specified scope and evaluation screening, the results of SVHC are **PASS**



**Authorized by**  
Rabinra Samal,  
Assistant Manager- Operation – ACMT Lab

TUV India Private Limited  
Registered & Head Office: 801, Raheja Plaza-1, L.B.S. Marg, Chhatkopar (W), Mumbai - 400 086 • CIN: U7140MH1989PTC052930  
Laboratory Address: 1st Floor, A72, Block A, Sector 64, Noida, Uttar Pradesh - 201305  
Phone No 0120-4634210 • Toll free: 1800-209-0902 • E-mail: acmlab@tuv-nord.com • URL: www.tuv-nord.com/in

## RoHS Compliant for Mill Finish & Anodized Finished from TUV India



**Test Report**  
Report No : TUV(I)/NL-145/25-26/NL-0525000150 PI  
Date : 14 May 2025  
ULR : TC1382225000002794F

Name and address of customer : Bhoruka Extrusions Pvt Ltd  
#1,KRS Road, Metagalli,  
Mysore  
Pin Code: 570016

Reg No. : NL-145/25-26  
CA No. : NL-0525000150



Name of the sample : **Recycle more than 75% aluminium content-Black Anodising**  
Batch No./ Code no. : Grade :- 6063-T6 Alloy  
Color :- BLACK  
Discipline : Chemical  
Product Category : Metal

Date of sample receipt : 06 May 2025  
Date(s) of analysis : 08 May 2025 - 14 May 2025  
Sample drawn by : Customer

Objectives of Examination : As per RoHS Directive (EU) 2015/863 amending Annex II to Directive 2011/65/EU

**Test Requirement** : **RoHS 10E**

**Results Summary:**  
Based on the performed tests on submitted sample(s), the results of Cadmium, Lead, Mercury, Hexavalent chromium, Polybrominated biphenyls (PBBs), Polybrominated diphenyl ethers (PBDEs) and Phthalates such as Bis(2-ethylhexyl) phthalate (DEHP), Butyl benzyl phthalate (BBP) and Diisobutyl phthalate (DIBP) **Comply** with the limits as set by RoHS Directive (EU) 2015/863 amending Annex II to Directive 2011/65/EU



**Authorized by**  
Rabinra Samal,  
Assistant Manager- Operation – ACMT Lab

TUV India Private Limited  
Registered & Head Office: 801, Raheja Plaza-1, L.B.S. Marg, Chhatkopar (W), Mumbai - 400 086 • CIN: U7140MH1989PTC052930  
Laboratory Address: 1st Floor, A72, Block A, Sector 64, Noida, Uttar Pradesh - 201305  
Phone No 0120-4634210 • Toll free: 1800-209-0902 • E-mail: acmlab@tuv-nord.com • URL: www.tuv-nord.com/in



# Akzonobel - Approved Applicator

Bhoruka Extrusions is an approved applicator for AkzoNobel's Interpon D series -D1000, D2000, and D3000- offering warranty periods of 15, 25, and 30 years respectively.

# Interpon D Approved Applicator D1000 -AAMA 2603



# Interpon D Approved Applicator D2000 -AAMA 2604



# Interpon D Approved Applicator D3000 -AAMA 2605



# Certifications

## Jotun - Approved Applicator

Bhoruka Extrusions is an approved applicator for Jotun’s Façade, Super Durable Series & Durasol series - offering warranty periods of 15, 25, and 30 years respectively.

### Jotun’s Façade Series



#### Certificate of Approval

*Bhoruka Extrusions Pvt. Ltd.*  
No.1 KRS Road, Metagalli, Mysore -570016

is certified as an Approved Applicator to coat

Jotun Façade Series

a product from Jotun Powder Coatings

This company fulfils the requirements set by Jotun Powder Coatings for pre-treatment and application of powder coatings. These include having the necessary equipment, process controls and technical knowledge to comply with Jotun Powder Coatings standards.



Date: 1<sup>st</sup> January 2025  
(Certificate valid for one year from above date)

Authorized Signatory  
Jotun India Pvt. Ltd.

### Jotun’s Super Durable Series



#### Certificate of Approval

*Bhoruka Extrusions Pvt. Ltd.*  
No.1 KRS Road, Metagalli, Mysore -570016

is certified as an Approved Applicator to coat

Jotun Super Durable Series

a product from Jotun Powder Coatings

This company fulfils the requirements set by Jotun Powder Coatings for pre-treatment and application of powder coatings. These include having the necessary equipment, process controls and technical knowledge to comply with Jotun Powder Coatings standards.



Date: 1<sup>st</sup> January 2025  
(Certificate valid for one year from above date)

Authorized Signatory  
Jotun India Pvt. Ltd.

### Jotun’s Durasol Series



#### Certificate of Approval

*Bhoruka Extrusions Pvt. Ltd.*  
No.1 KRS Road, Metagalli, Mysore -570016

is certified as an Approved Applicator to coat

Jotun Durasol Series

a product from Jotun Powder Coatings

This company fulfils the requirements set by Jotun Powder Coatings for pre-treatment and application of powder coatings. These include having the necessary equipment, process controls and technical knowledge to comply with Jotun Powder Coatings standards.



Date: 29<sup>th</sup> May 2025  
(Certificate valid for one year from above date)

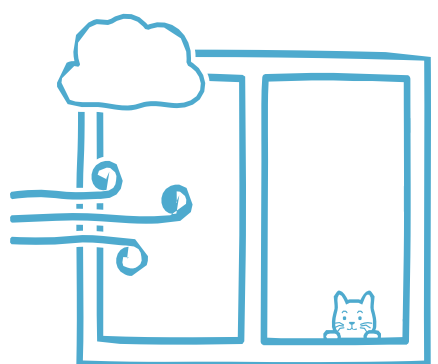
Authorized Signatory  
Jotun India Pvt. Ltd.





**IWIN-S Aluminium Doors and Windows** is a home-creation B2B brand designed by **YKK AP** with **Japanese Precision**. These are system windows tested **for air, water, and sound** performance, suitable for both residential and commercial projects.

- ◆ Profiles are manufactured and coated In-house at Bhoruka Extrusions
- ◆ Hardware's / Parts and Accessories are manufactured In-house at YKK AP
- ◆ Global Assurance, Japanese Excellence & Comprehensive In-house Capabilities



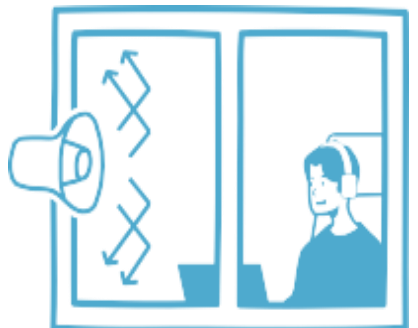
Structural  
Wind load  
2.5Kpa



Water  
Tightness  
300/350/600 Pa



Air  
Infiltration  
1.2m³/h·m²

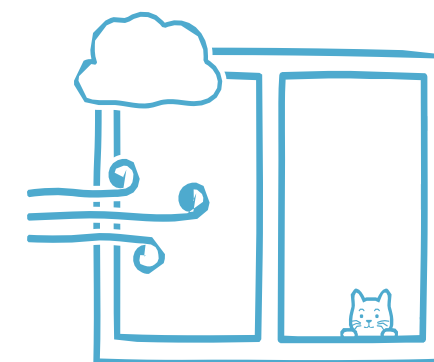


Sound  
Insulation  
-30dB(Grade 2)



**IWIN-E** is our **new fenestration series** combining economic appeal and functionality. Designed for spaces with indirect environmental exposure

- ◆ Profiles are manufactured and coated In-house at Bhoruka Extrusions
- ◆ Hardware's / Parts and Accessories are manufactured In-house at YKK AP
- ◆ Global Assurance, Japanese Excellence & Comprehensive In-house Capabilities



Structural  
Wind load  
1.2Kpa



Water  
Tightness  
150 Pa



Air  
Infiltration  
1.2m<sup>3</sup>/h·m<sup>2</sup>



Sound  
Insulation  
-30dB(Grade 2)



# HO & Branch Details

Bhoruka Extrusions Pvt Ltd  
No 1, KRS Road, Metagalli Industrial  
Area, Metagalli, Mysore-570016

## ◆ Head-office

Mysore, Karnataka

**Mr Pavan Kumar B S**

[pavan\\_kumar@bhorukaextrusions.com](mailto:pavan_kumar@bhorukaextrusions.com)

+91-9844615202

## ◆ Bangalore Branch Office

**Mr Vicky Appaiah**

[vicky\\_cs@bhorukaextrusions.com](mailto:vicky_cs@bhorukaextrusions.com)

+91-9731110088



## ◆ Chennai Branch Office

**Mr Santhosh N**

[santhosh\\_n@bhorukaextrusions.com](mailto:santhosh_n@bhorukaextrusions.com)

+91-9840727164

## ◆ Delhi Branch Office

**Mr Ashok Pareek**

[ashokkumar\\_pareek@bhorukaextrusions.com](mailto:ashokkumar_pareek@bhorukaextrusions.com)

+91-9844615202

## ◆ Hyderabad Branch Office

**Mr Satish Kumar**

[satish\\_a@bhorukaextrusions.com](mailto:satish_a@bhorukaextrusions.com)

+91-9606952147

## ◆ Mumbai Branch Office

**Mr Sudipta Raj Roy**

[sudiptaraj\\_roy@bhorukaextrusions.com](mailto:sudiptaraj_roy@bhorukaextrusions.com)

+91-7738012404

## ◆ Pune Branch Office

**Mr Rajesh Varshney**

[rajesh\\_varshney@bhorukaextrusions.com](mailto:rajesh_varshney@bhorukaextrusions.com)

+91-9980713838





**Extruding Excellence !**